

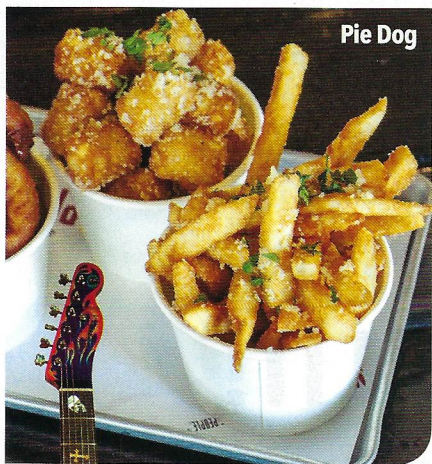
## Fullerton

BY NANCY SOKOLER STEINER  
PHOTOGRAPHS BY DAVID RICKS

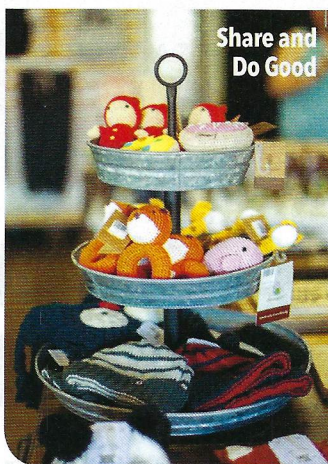
**K**nowing that the Santa Fe Railroad planned to build its new line in the area north of Anaheim, brothers George and Edward Amerige purchased more than 400 acres there in May 1887. They named the new town after the manager of the railroad's real estate subsidiary, George Fullerton. While overshadowed by other Orange County cities boasting sandy shorelines or famous amusement parks, Fullerton's revitalized downtown, historic buildings, and abundance of restaurants have raised the profile of this charming college town. Folks can escape busy downtown and head to the Fullerton Arboretum, the county's largest botanical garden, which offers a range of habitats, including woodland, desert, Mediterranean, and subtropical. And at 26 acres, it will take a couple of hours to cover the grounds. 1900 Associated Road. (657) 278-3407; [fullertonarboretum.org](http://fullertonarboretum.org).



Fullerton Arboretum



Pie Dog



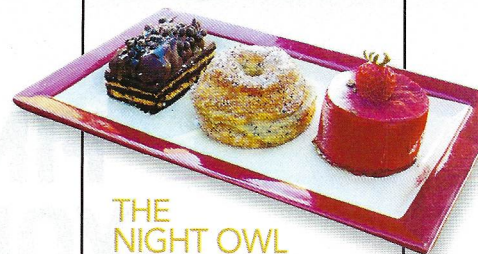
Share and Do Good

Fullerton Museum Center



Comic Hero University

## SWEET EATS



### THE NIGHT OWL

Sinful selections at this coffeehouse include (pictured, left to right) a multitiered salted caramel chocolate bar, an espresso cream-filled cronut, and a strawberry cake with mascarpone filling. 200 N. Harbor Boulevard. (714) 525-0305; [tnofullerton.com](http://tnofullerton.com).

### CLOUD

A texture of soft, creamy snowflakes imbues the shaved snow treats here. Only real, natural ingredients—no powders nor syrups—infuse such flavors as caramelized banana, mango, and Colombian coffee. 229 E. Commonwealth Avenue. (714) 871-7669; [cloudshavedsnow.com](http://cloudshavedsnow.com).



### TRANQUIL TEA LOUNGE

Try the Road to Hana—a flavorful blend of black tea, organic rooibos, coconut, chocolate, and vanilla—and pair it with a warm, chocolate-lavender scone (pictured). 106 W. Wilshire Avenue. (714) 869-3577; [tranquiltealounge.com](http://tranquiltealounge.com).

## Found Around Town

**Fullerton Museum Center** has a permanent exhibit on Fender guitars (Leo Fender started his business in Fullerton), as well as rotating exhibits exploring popular culture. 301 N. Pomona Avenue. (714) 738-6545; [tinyurl.com/fmuseum](http://tinyurl.com/fmuseum). Each purchase in the **Share and Do Good** shop supports a deserving organization or cause. Finds include scarves woven by impoverished women in Africa and greeting cards made by survivors of human trafficking. 114 E. Amerige Avenue. (714) 305-5582; [shareanddogood.com](http://shareanddogood.com). The **Comic Hero University** store has a large selection of comic books and boasts a small arcade with pinball machines. 140 E. Santa Fe Avenue. (949) 424-3768; [comicherou.com](http://comicherou.com).

Diners can sip sangria and sample tapas at **Café Hidalgo**, located in historic Villa del Sol's courtyard. Try the ceviche salbutes, served on flat tostadas and topped with mango relish and avocado. 305 N. Harbor Boulevard. (714) 447-3202; [cafehidalgofullerton.com](http://cafehidalgofullerton.com). Amusingly named choices such as Blazing Saddles (burger with feta, garlic sauce, and a house-made three-pepper puree) and Missing Link (spicy chicken sausage) along with a selection of 23 craft brews will keep you in good spirits at **Pie Dog**. Or opt for a burger topped with mac-n-cheese and hot Cheetos. 229-A E. Commonwealth Avenue. (714) 681-1298; [piedogfullerton.com](http://piedogfullerton.com).

Call to confirm hours and availability of businesses, attractions, and events before you visit. Be sure to designate a driver if you plan to drink alcohol.

Find more Day Trips at [AAA.com/daytrips](http://AAA.com/daytrips).